

- Simple, modular design
- AC-motor with frequency inverter (index axis)
- Endless rotation

This is a two station positioner for workpieces that require rotation about one axis. It has been designed for operator ease of use, with a suitable working height for loading/unloading the fixtures. The fixture discs on head- and tail-stock has endless rotation.

Suitable for workpieces with diameters up to 1300 mm.
Maximum payload up to 500 kg on each side.

Available accessories

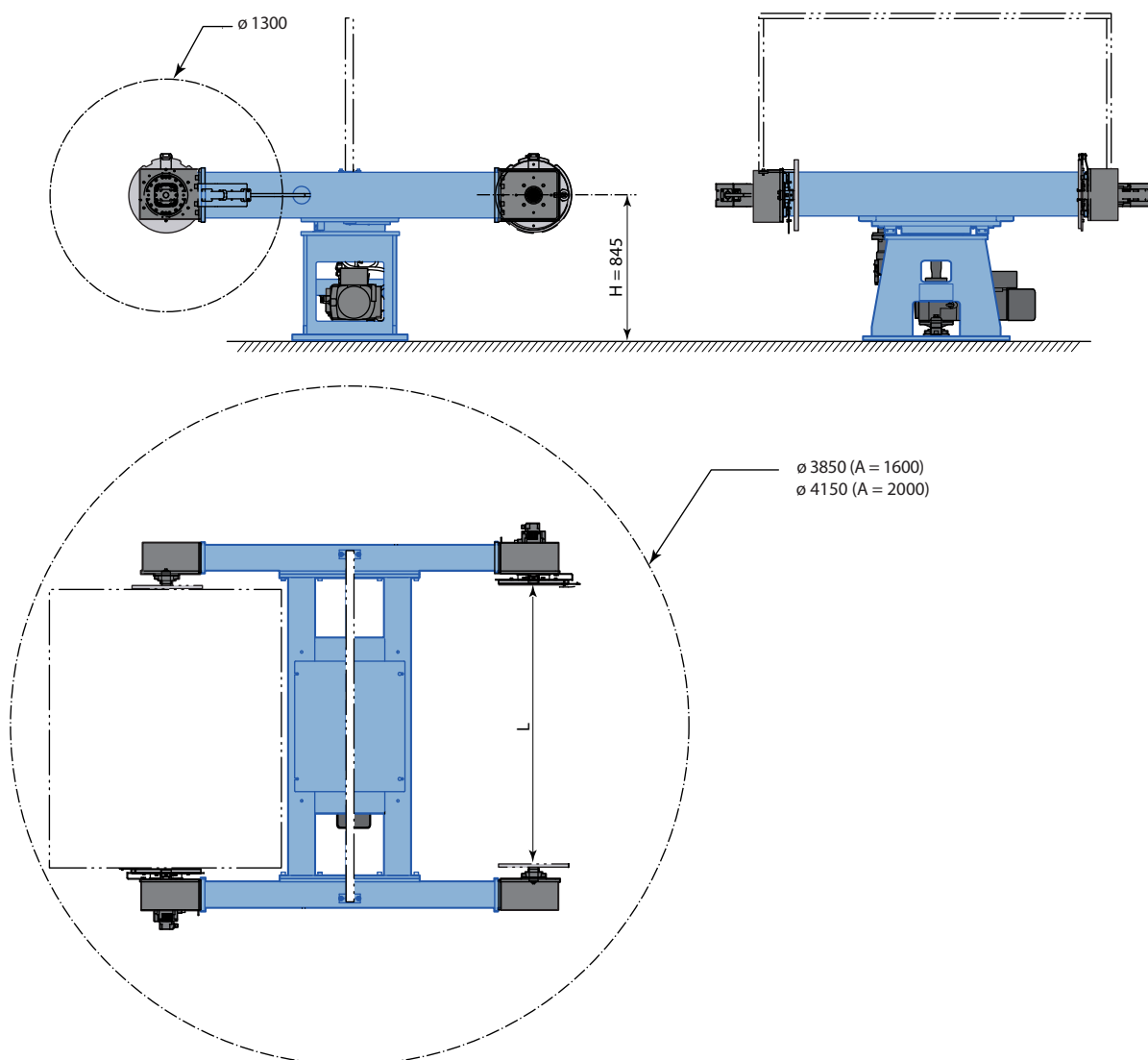
- Fixture discs for the tailstocks
- Fixture brackets
- Anti-glare shield
- Internal safety cables

Options

- Slip ring device
- Controlled air

Technical data		VMH-250 S2DM	VMH-500 S2DM
Maximum payload, per station	kg	250	500
Welding capacity, 100 % duty cycle	A	350	350
Welding capacity, 60 % duty cycle	A	460	460
Weight	kg	1300-1350	1370-1420
Distance between fixture plates (L)	mm	1600, 2000	1600, 2000
Maximum fixture's width, diameter (D)	mm	1300	1300
Height to fixture disc's centre (H)	mm	845	845
<i>Index axis</i>			
Torque, static	Nm	1574	2018
Index time	sec	7	7
Rated speed	rpm	0-9.1	0-7.1
<i>Rotating axis</i>			
Torque, dynamic	Nm	393	608
Torque, static	Nm	314	486
Rated speed	rpm	0-22.5	0-16.8
Maximum speed	rpm	37	44.3
Axis' rotation		Endless	Endless
Rated offset from COG	mm	128	100

VMH-250 S2DM, VMH-500 S2DM



Technical data may be subject to change without previous notice
© YASKAWA Nordic AB · Reg No. 1053EN-03 · 2012-03