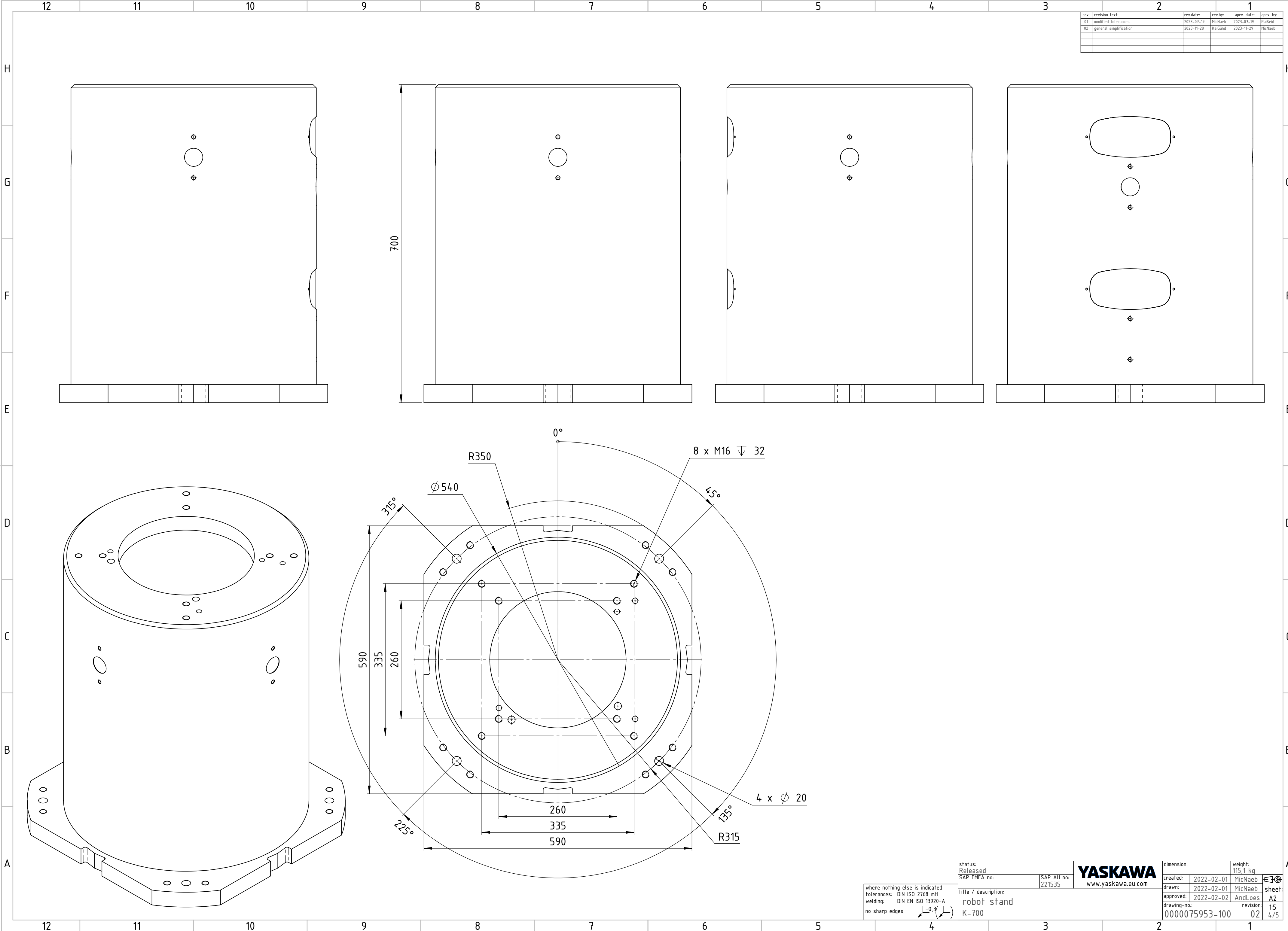


drawing: kinema_robot_21035, version: 02.1, last saved: 23.02.2024, 9h18:36, model filename: kinam08_20755, version: 02.1, last saved: 23.02.2024, 9h03:33

The reproduction, distribution and utilization of this document as well as the communication of its contents to others without express authorization is prohibited. Offenders will be held liable for the payment of damages. All rights reserved in the event of the grant of a patent, utility model or design



| rev: | revision text: | rev.date: | rev.by: | aprv.date: | aprv.by: |
|------|------------------------|------------|---------|------------|----------|
| 01 | modified tolerances | 2023-07-19 | MicNaeb | 2023-07-19 | RaSeid |
| 02 | general simplification | 2023-11-28 | KaiGund | 2023-11-29 | MicNaeb |
| | | | | | |
| | | | | | |

where nothing else is indicated
tolerances: DIN ISO 2768-mH
welding: DIN EN ISO 13920-A
no sharp edges

| | | | |
|--|--|--|--------------------------------------|
| status: Released | SAP EMEA no: | SAP AH no: 221535 | YASKAWA www.yaskawa.eu.com |
| title / description: robot stand K-700 | created: 2022-02-01 drawn: 2022-02-01 approved: 2022-02-02 drawing-no: 0000075953-100 | weight: 115,1 kg MicNaeb AndLoes revision: 02 | sheet: A2 15 4/5 |